

Raccorderia in Ottone Gialla

Yellow Brass Fittings



■ C005 | GOMITO MF ELBOW MF



Codice Code	Misura Size	€			
C005000	1/4"	1,650	10	250	500
C005001	3/8"	1,650	10	100	250
C005002	1/2"	1,782	10	80	150
C005003	3/4"	2,600	10	50	100
C005004	1"	4,410	5	30	50
C005005	1"1/4	7,410	–	15	30
C005006	1"1/2	10,880	–	10	25
C005007	2"	19,028	–	5	10

■ C006 | GOMITO FF ELBOW FF



Codice Code	Misura Size	€			
C006000	1/4"	1,540	10	250	500
C006001	3/8"	1,540	10	100	250
C006002	1/2"	2,100	10	80	150
C006003	3/4"	2,410	10	50	100
C006004	1"	4,388	5	30	50
C006005	1"1/4	7,290	–	15	30
C006006	1"1/2	10,685	–	10	25
C006007	2"	17,940	–	5	10

■ C042 | GOMITO RIDOTTO FF REDUCED ELBOW FF



Codice Code	Misura Size	€			
C042003	3/4" x 1/2"	3,094	10	50	100
C042004	1" x 1/2"	7,871	5	30	50
C042005	1" x 3/4"	6,134	5	30	50

■ C043 | GOMITO RIDOTTO MF REDUCED ELBOW MF



Codice Code	Misura Size	€			
C043003	M 1/2" x 3/4" F	2,910	10	50	100
C043004	M 1/2" x 1" F	6,570	5	30	60
C043005	M 3/4" x 1" F	6,400	5	30	60

■ C082 | GOMITO FF c/FLANGIA ELBOW FF WITH FLANGE



Codice Code	Misura Size	€			
C082002	1/2"	3,285	10	70	150

■ C083 | GOMITO MF c/FLANGIA ELBOW MF WITH FLANGE



Codice Code	Misura Size	€			
C083002	1/2"	2,970	10	70	150

■ C017 | GOMITO MM ELBOW MM



Codice Code	Misura Size	€			
C017000	1/4"	1,600	10	250	500
C017001	3/8"	1,600	10	100	200
C017002	1/2"	2,480	10	80	150
C017003	3/4"	3,080	10	50	100
C017004	1"	5,720	5	30	50
C017005	1"1/4	7,480	–	15	30

■ C056 | GOMITO 45° MF ELBOW 45° MF



Codice Code	Misura Size	€			
C056002	1/2"	3,634	10	80	150
C056003	3/4"	5,100	10	50	100
C056004	1"	6,270	5	40	80
C056005	1"1/4	9,702	–	15	40
C056006	1"1/2	12,100	–	10	30
C056007	2"	18,310	–	8	15

■ C057 | GOMITO 45° FF ELBOW 45° FF



Codice Code	Misura Size	€			
C057002	1/2"	3,600	10	80	150
C057003	3/4"	4,760	10	50	100
C057004	1"	5,871	5	40	80
C057005	1"1/4	8,510	–	15	40
C057006	1"1/2	10,880	–	10	30
C057007	2"	14,514	–	8	15

■ C007 | TEE FFF TEE FFF



Codice Code	Misura Size	€			
C007000	1/4"	1,920	10	200	400
C007001	3/8"	1,920	10	100	200
C007002	1/2"	2,190	10	50	120
C007003	3/4"	2,740	10	40	80
C007004	1"	5,531	5	20	40
C007005	1"1/4	9,074	–	12	30
C007006	1"1/2	13,794	–	10	20
C007007	2"	16,970	–	6	12

■ C016 | TEE RIDOTTO FFF REDUCED TEE FFF



Codice Code	Misura Size	€			
C016002	3/4" x 1/2" x 3/4"	3,800	10	40	80
C016004	1" x 1/2" x 1"	7,200	5	20	40
C016005	1" x 3/4" x 1"	6,800	5	20	40
C016006	1"1/4 x 3/4" x 1"1/4	13,640	–	12	30
C016007	1"1/4 x 1" x 1"1/4	13,060	–	12	30

■ C040 | TEE FMF RIDOTTO REDUCED TEE FMF



Codice Code	Misura Size	€			
C040004	F1" x M1/2" x F1" (rid. centr.)	7,857	5	20	40
C040005	F1" x M3/4" x F1" (rid. centr.)	6,780	5	20	40

■ C010 | TEE FFM TEE FFM



Codice Code	Misura Size	€			
C010000	1/4"	1,885	10	200	400
C010002	1/2"	3,250	10	50	120
C010003	3/4"	4,345	10	40	80
C010004	1"	6,305	5	20	50
C010006	1"1/2	15,200	–	10	20

■ C031 | TEE MFM TEE MFM



Codice Code	Misura Size	€			
C031000	1/4"	1,885	10	200	400
C031001	3/8"	1,985	10	100	200
C031002	1/2"	3,500	10	70	150

■ C038 | TEE MMM TEE MMM



Codice Code	Misura Size	€			
C038000	1/4"	1,885	10	200	400
C038001	3/8"	1,985	10	100	200

■ C090 | TEE FMF TEE FMF



Codice Code	Misura Size	€			
C090000	1/4"	1,885	10	200	400

■ C091 | TEE FMM TEE FMM



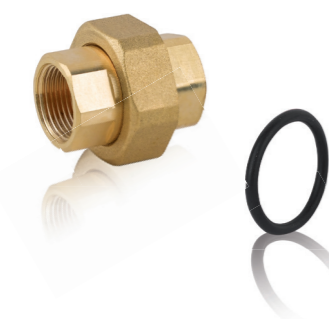
Codice Code	Misura Size	€			
C091000	1/4"	1,885	10	200	400

■ C032 | RACCORDO A CROCE FFFF CROSS FITTING FFFF



Codice Code	Misura Size	€			
C032002	1/2"	2,680	10	40	80
C032003	3/4"	3,260	10	30	60
C032004	1"	6,217	5	15	40

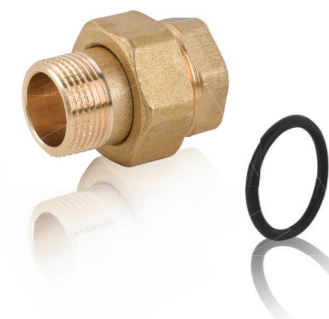
■ C036 | RACCORDO DIRITTO 3 PZ. FF CON O-RING 3 PIECES STRAIGHT FF WITH O-RING



Codice Code	Misura Size	€			
C036002	1/2"	5,200	10	80	180
C036003	3/4"	7,190	10	50	100
C036004	1"	8,450	10	20	50
* C036005	1"1/4	-	-	-	-
* C036006	1"1/2	-	-	-	-
* C036007	2"	-	-	-	-

* misure disponibili solo su richiesta

■ C008 | RACCORDO DIRITTO IN 3 PZ. MF CON O-RING 3 PIECES STRAIGHT FITTING MF WITH O-RING



Codice Code	Misura Size	€			
C008002	1/2"	2,600	10	80	200
C008003	3/4"	4,050	10	50	120
C008004	1"	6,968	10	20	60
C008005	1"1/4	9,463	-	15	40
C008006	1"1/2	15,480	-	10	25
C008007	2"	26,710	-	7	15

■ C008G | RACCORDO DIRITTO IN 3 PZ. MF SEDE PIANA CON GUARNIZIONE 3 PIECES STRAIGHT FITTING MF WITH GASKET



Codice Code	Misura Size	€			
C008002G	1/2"	2,600	10	80	200
C008003G	3/4"	4,050	10	50	120
C008004G	1"	6,968	10	20	60
C008005G	1"1/4	9,463	-	15	40
C008006G	1"1/2	15,480	-	10	25
C008007G	2"	26,710	-	7	15

■ C009 | RACCORDO CURVO IN 3 PZ. MF CON O-RING 3 PIECES ELBOW MF WITH O-RING



Codice Code	Misura Size	€			
C009002	1/2"	3,600	10	80	150
C009003	3/4"	5,682	10	60	80
C009004	1"	8,640	10	20	50
C009005	1"1/4	13,450	-	15	30
C009006	1"1/2	23,680	-	7	20
C009007	2"	43,480	-	4	8

■ C009G | RACCORDO CURVO IN 3 PZ. MF SEDE PIANA CON GUARNIZIONE 3 PIECES ELBOW MF WITH GASKET



Codice Code	Misura Size	€			
C009002G	1/2"	3,600	10	80	150
C009003G	3/4"	5,682	10	60	80
C009004G	1"	8,640	10	20	50
C009005G	1"1/4	13,450	-	15	30
C009006G	1"1/2	23,680	-	7	20
C009007G	2"	43,480	-	4	8

■ C037 | RACCORDO IN 2 PZ. FF PER POMPA CON GUARNIZIONE 2 PIECES STRAIGHT FF FOR PUMPS WITH GASKET



Codice Code	Misura Size	€			
C037001	1/2" x 1"1/4	3,440	10	50	100
C037002	1/2" x 1"	2,980	10	70	150
C037003	3/4" x 1"1/4	3,667	10	50	100
C037004	1" x 1"1/2	4,920	10	40	100
C037005	1"1/4 x 2"	7,520	5	20	40
C037006	1" x 2"	7,590	5	20	50
C037007	3/4" x 1"1/2	5,781	10	40	100

■ C047 | CALOTTA NUT



Codice Code	Misura Size	€			
C047002	1/2"	0,690	10	250	500
C047003	3/4"	0,940	10	200	400
C047004	1"	1,650	10	100	250
C047005	1"1/4	2,577	–	80	200
C047006	1"1/2	2,766	–	70	150
C047007	2"	4,714	–	40	80
C047008	2"1/2	7,731	–	20	50

■ C048 | CODOLO TANG



Codice Code	Misura Size	€			
C048001	3/8"	0,897	10	350	800
C048002	1/2"	0,925	10	200	400
C048003	3/4"	1,280	10	150	300
C048004	1"	2,180	10	70	150
C048005	1"1/4	3,702	–	40	80
C048006	1"1/2	5,440	–	25	50
C048007	2"	9,760	–	15	30

■ C049 | CODOLO + CALOTTA c/GUARNIZIONE TANG + NUT WITH GASKET



Codice Code	Misura Size	€			
C049001	Codolo 3/8" + Calotta 1/2"	1,587	10	250	500
C049002	Codolo 1/2" + Calotta 3/4"	1,865	10	100	200
C049003	Codolo 3/4" + Calotta 1"	2,930	10	70	150
C049004	Codolo 1" + Calotta 1"1/4	4,757	10	50	100
C049005	Codolo 1"1/4 + Calotta 1"1/2	6,468	5	25	50
C049006	Codolo 1"1/2 + Calotta 2"	10,154	5	20	40
C049007	Codolo 2" + Calotta 2"1/2	17,491	5	10	20

■ C102 | CODOLO + CALOTTA MF TANG + NUT MF



Codice Code	Misura Size	€			
C102002	1/2" + 1/2"	3,814	10	80	250
C102003	3/4" + 3/4"	5,314	10	60	150
C102004	1" + 1"	7,885	10	40	100

■ C002 | MANICOTTO FF SLEEVE FF



Codice Code	Misura Size	€			
C002000	1/4"	0,984	10	400	600
C002001	3/8"	0,984	10	250	500
C002002	1/2"	1,350	10	100	250
C002003	3/4"	1,530	10	50	150
C002004	1"	2,480	10	40	80
C002005	1"1/4	3,530	–	30	80
C002006	1"1/2	5,600	–	20	50
C002007	2"	9,370	–	13	25

■ C019 | MANICOTTO RIDOTTO FF REDUCED SLEEVE FF



Codice Code	Misura Size	€			
C019000	3/8" x 1/2"	1,800	10	150	400
C019101	3/8" x 3/4"	1,970	10	80	200
C019002	3/8" x 1"	2,108	10	80	200
C019111	1/4" x 1/2"	1,310	10	150	400
C019001	1/4" x 3/4"	1,970	10	80	200
C019003	1/2" x 3/4"	1,522	10	80	200
C019004	1/2" x 1"	2,120	10	70	180
C019005	3/4" x 1"	2,200	10	70	150
C019006	3/4" x 1"1/4	3,880	10	40	80
C019007	1" x 1"1/4	4,010	10	40	80
C019008	1" x 1"1/2	6,000	–	30	80
C019009	1"1/4 x 1"1/2	5,700	–	30	60
C019010	1"1/4 x 2"	10,260	–	20	50
C019011	1"1/2 x 2"	9,860	–	20	50
C019012	1" x 2"	9,420	–	20	50
C019013	2" x 2"1/2	17,560	–	10	20

■ C022 | MANICOTTO MF SLEEVE MF



Codice Code	Misura Size	€			
C022003	M3/4" x F3/4"	1,685	10	80	180
C022004	M1" x F1"	2,540	10	70	150
C022005	M1"1/4 x F1"1/4	3,400	10	40	100
C022006	M1"1/2 x F1"1/2	5,457	10	25	70

■ C023 | MANICOTTO RIDOTTO FM REDUCED SLEEVE FM



Codice Code	Misura Size	€			
C023111	F3/8" x M1/4"	1,250	10	200	500
C023000	F1/2" x M1/4"	1,250	10	150	400
C023001	F1/2" x M3/8"	1,250	10	150	400
C023011	F3/4" x M3/8"	1,540	10	100	250
C023002	F3/4" x M1/2"	1,350	10	100	250
C023003	F1" x M3/4"	1,965	10	70	150
C023102	F1" x M1/2"	1,851	10	70	150
C023004	F1"1/4 x M1"	3,100	10	40	100
C023005	F1"1/4 x M3/4"	3,860	10	40	100
C023006	F1"1/4 x M1/2"	2,650	10	50	100
C023007	F1"1/2 x M1"	4,650	–	30	70
C023008	F1"1/2 x M1"1/4	4,290	–	30	70
C023009	F2" x M1"1/2	7,722	–	20	50

■ C003 | NIPPLES DOPPIO MM DOUBLE NIPPLE MM



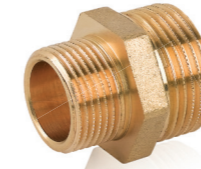
Codice Code	Misura Size	€			
C003000	1/4"	0,628	10	450	1000
C003001	3/8"	0,720	10	300	800
C003002	1/2"	0,800	10	200	400
C003003	3/4"	1,200	10	100	250
C003004	1"	1,980	10	50	120
C003005	1"1/4	3,880	–	35	80
C003006	1"1/2	4,680	–	25	70
C003007	2"	6,740	–	15	35
C003008	2"1/2	16,500	–	9	18
C003009	3"	19,271	–	9	18

■ C013 | NIPPLES DOPPIO PROLUNGATO MM LONG DOUBLE NIPPLE MM



Codice Code	Misura Size	€			
C013002	1/2"	1,051	10	150	300
C013003	3/4"	1,874	10	80	150
C013004	1"	3,170	10	50	100

■ C004 | NIPPLES DOPPIO RIDOTTO MM REDUCED DOUBLE NIPPLE MM



Codice Code	Misura Size	€			
C004000	1/4" x 1/8"	0,870	10	450	1000
C004001	1/4" x 3/8"	0,900	10	300	700
C004002	1/4" x 1/2"	0,970	10	250	500
C004003	3/8" x 1/2"	0,820	10	200	400
C004005	1/2" x 3/4"	1,170	10	120	250
C004006	1/2" x 1"	2,170	10	70	150
C004007	3/4" x 1"	2,070	10	70	150
C004108	1/2" x 1"1/4	3,140	10	40	80
C004008	3/4" x 1"1/4	3,400	10	40	80
C004009	1" x 1"1/4	3,272	10	40	80
C004010	1" x 1"1/2	4,760	10	30	80
C004011	1"1/4 x 1"1/2	4,808	–	30	80
C004112	1" x 2"	7,045	–	20	60
C004012	1"1/4 x 2"	7,277	–	20	60
C004013	1"1/2 x 2"	8,177	–	20	60
C004014	2" x 2"1/2	17,151	–	10	25
C004015	2"1/2 x 3"	26,450	–	8	18

■ C034 | NIPPLES PER ALIMENTATORI (1/4" F x 1/2" M) NIPPLE FOR FEEDER (1/4" F x 1/2" M)



Codice Code	Misura Size	€			
C034004	1"	4,170	–	45	100
C034005	1"1/4	6,910	–	25	50
C034006	1"1/2	8,740	–	20	40
C034007	2"	10,680	–	12	25

■ C117 | NIPPLES FORATO PERFORATED NIPPLE



Codice Code	Misura Size	€			
C117004	1" x 1/4"	5,330	–	45	100
C117005	1"1/4 x 1/4"	9,750	–	25	50
C117006	1"1/2 x 1/2"	15,600	–	20	40
C117007	2" x 1/2"	19,750	–	12	25

NEW IN

■ C018 | RIDUZIONE MF HEXAGONAL REDUCTION MF



Codice Code	Misura Size	€			
C018000	M1/4" x F1/8"	0,710	10	500	1200
C018001	M3/8" x F1/8"	0,915	10	500	1000
C018002	M3/8" x F1/4"	0,802	10	500	1000
C018003	M1/2" x F1/4"	0,988	10	350	700
C018004	M1/2" x F3/8"	0,686	10	250	600
C018005	M3/4" x F1/4"	1,370	10	150	400
C018006	M3/4" x F3/8"	1,160	10	150	400
C018007	M3/4" x F1/2"	0,940	10	150	400
C018018	M1" x F3/8"	2,770	10	100	250
C018008	M1" x F1/2"	2,010	10	100	250
C018009	M1" x F3/4"	1,330	10	100	250
C018010	M1"1/4 x F1"	2,670	10	50	120
C018110	M1"1/4 x F1/2"	3,950	10	50	120
C018011	M1"1/4 x F3/4"	3,278	10	50	120
C018012	M1"1/2 x F1"1/4	2,695	–	50	120
C018112	M1"1/2 x F1/2"	6,420	–	50	120
C018013	M1"1/2 x F1"	4,460	–	50	120
C018113	M1"1/2 x F3/4"	5,440	–	50	120
C018014	M2" x F1"1/4	7,140	–	30	60
C018114	M2" x F1/2"	9,950	–	30	60
C018015	M2" x F1"1/2	5,850	–	30	60
C018017	M2" x F3/4"	9,540	–	30	60
C018016	M2" x F1"	8,710	–	30	60
C018019	M2"1/2 x F1"1/4	12,728	–	10	30
C018020	M2"1/2 x F1"1/2	16,400	–	10	30
C018021	M2"1/2 x F2"	16,842	–	10	30
C018023	M3" x F2"1/2	18,910	–	10	20
C018024	M3" x F2"	25,340	–	10	20
C018124	M3" x F1"1/2	29,900	–	10	20

■ C030 | NIPPLES TUTTO FILETTO NIPPLE ALL THREAD



Codice Code	Misura Size	€			
C030002	1/2" x 40 mm	1,611	10	150	300
C030003	3/4" x 40 mm	1,843	10	100	250
C030004	1" x 40 mm	2,590	10	70	150
C030005	1"1/4 x 40 mm	3,200	–	50	100

■ C077 | BARRA FILETTATA LUNGHEZZA 1 METRO THREADED BAR BRASS LENGTH 1 METER



Codice Code	Misura Size	€	SFUSO UNPACKAGED		
C077002	1/2"	35,300	–	–	–
C077003	3/4"	54,400	–	–	–
C077004	1"	68,500	–	–	–
C077005	1"1/4	87,800	–	–	–
C077006	1"1/2	132,840	–	–	–
C077007	2"	182,550	–	–	–

■ C014 | TAPPO FEMMINA FEMALE PLUG



Codice Code	Misura Size	€			
C014002	3/8"	0,540	10	350	700
C014003	1/2"	0,640	10	250	500
C014004	3/4"	0,914	10	200	400
C014005	1"	1,280	10	100	250
C014006	1"1/4	2,280	–	80	200
C014007	1"1/2	2,970	–	70	150
C014008	2"	5,348	–	40	80

■ C033 | GHIERA DI RIDUZIONE S/BATTUTA REDUCING RING WITHOUT BEATING



Codice Code	Misura Size	€			
C033004	1/2" x 3/8"	1,277	10	300	600
C033005	3/4" x 1/2"	1,417	10	250	500
C033006	3/4" x 1"	1,623	10	150	300
C033007	1"1/4 x 1"	2,514	10	120	250
C033008	1"1/2 x 1"	3,154	–	100	200
C033009	1" x 1/2"	2,291	–	150	300

■ C020 | TAPPO MASCHIO CON ESAGONO MALE PLUG WITH EXAGON



Codice Code	Misura Size	€			
C020003	3/8"	0,683	10	350	700
C020004	1/2"	0,710	10	250	500
C020005	3/4"	1,080	10	200	400
C020006	1"	1,542	10	100	250
C020007	1"1/4	2,828	–	80	200
C020008	1"1/2	3,870	–	70	150
C020009	2"	5,810	–	40	80

■ C001 | TAPPO MASCHIO MALE PLUG



Codice Code	Misura Size	€			
C001003	3/8"	0,617	10	350	800
C001004	1/2"	0,640	10	200	500
C001005	3/4"	1,028	10	150	400
C001006	1"	1,600	10	100	250
C001007	1"1/4	2,940	–	60	140
C001008	1"1/2	3,520	–	40	100
C001009	2"	7,115	–	20	50

■ C021 | PROLUNGA RIDOTTA REDUCED EXTENSION



Codice Code	Misura Size	€			
C021001	F1/2" x M3/8"	1,285	10	200	400
C021002	F3/4" x M1/2"	1,828	10	150	300
C021003	F1" x M1/2"	2,971	10	70	150
C021004	F1" x M3/4"	3,057	10	70	150

■ C011 | PROLUNGA STAMPATA MF HOT STAMP EXTENSION MF



Codice Code	Misura Size	€			
C011000	1/2" x 10 mm	0,940	10	200	400
C011001	1/2" x 15 mm	0,970	10	200	400
C011002	1/2" x 20 mm	1,190	10	150	350
C011003	1/2" x 25 mm	1,370	10	150	300
C011004	1/2" x 30 mm	1,540	10	120	250

■ C068 | PROLUNGA MF LUNGHEZZA 80 mm EXTENSION MF LENGTH 80 mm



Codice Code	Misura Size	€			
C06800280	F1/2" x M1/2"	5,143	10	40	100

■ C015 | PROLUNGA MF HEAVY EXTENSION MF



Codice Code	Misura Size	€			
C015100	3/8" x 10 mm	0,817	10	300	600
C015101	3/8" x 15 mm	1,020	10	250	500
C015102	3/8" x 20 mm	1,250	10	250	500
C015103	3/8" x 30 mm	1,685	10	150	300
C015104	3/8" x 40 mm	2,400	10	140	300
C015105	3/8" x 50 mm	2,970	10	120	250
C015106	3/8" x 60 mm	3,771	10	80	200
C015108	3/8" x 80 mm	4,560	10	60	150
C015110	3/8" x 100 mm	5,348	10	50	120
C015001	1/2" x 10 mm	1,092	10	200	400
C015002	1/2" x 15 mm	1,300	10	180	400
C015003	1/2" x 20 mm	1,620	10	120	300
C015004	1/2" x 25 mm	1,800	10	120	250
C015005	1/2" x 30 mm	2,054	10	120	250
C015006	1/2" x 40 mm	2,600	10	60	200
C015007	1/2" x 50 mm	3,200	10	50	180
C015008	1/2" x 60 mm	3,780	10	50	150
C015009	1/2" x 80 mm	5,140	10	40	100
C015010	1/2" x 100 mm	6,867	10	30	80
C015011	3/4" x 10 mm	1,881	10	140	300
C015012	3/4" x 15 mm	2,049	10	120	250
C015013	3/4" x 20 mm	2,336	10	80	200
C015113	3/4" x 25 mm	2,691	10	70	150
C015014	3/4" x 30 mm	2,873	10	70	150
C015015	3/4" x 40 mm	3,740	10	60	130
C015016	3/4" x 50 mm	4,310	10	40	100
C015017	3/4" x 60 mm	5,220	10	30	80
C015117	3/4" x 80 mm	6,570	10	20	60
C015217	3/4" x 100 mm	8,294	10	20	50
C015118	1" x 10 mm	2,886	10	80	200
C015018	1" x 15 mm	3,120	10	80	200
C015019	1" x 20 mm	3,536	10	60	130
C015021	1" x 30 mm	4,433	10	50	100
C015022	1" x 40 mm	5,680	10	30	80
C015023	1" x 50 mm	6,357	10	20	60

■ C012 | BARILOTTO MM EXTENSION MM



Codice Code	Misura Size	€			
C012038	1/2" x 40 mm	1,380	10	120	250
C012001	1/2" x 50 mm	1,465	10	120	250
C012002	1/2" x 60 mm	1,774	10	100	250
C012003	1/2" x 80 mm	2,400	10	80	200
C012004	1/2" x 100 mm	2,910	10	80	200
C012005	1/2" x 120 mm	3,480	10	60	150
C012006	1/2" x 150 mm	4,510	10	50	120
C012007	1/2" x 200 mm	5,970	10	40	90
C012008	1/2" x 250 mm	7,650	–	40	80
C012009	1/2" x 300 mm	9,220	–	15	30
C012129	1/2" x 400 mm	14,685	–	–	–
C012139	1/2" x 500 mm	18,171	–	–	–
C012239	1/2" x 600 mm	20,620	–	–	–
C012147	1/2" x 800 mm	29,142	–	–	–
C012149	1/2" x 1000 mm	36,743	–	–	–
C012010	3/4" x 40 mm	1,697	10	80	200
C012110	3/4" x 50 mm	2,050	10	70	200
C012011	3/4" x 60 mm	2,420	10	60	150
C012012	3/4" x 80 mm	3,200	10	40	100
C012013	3/4" x 100 mm	4,050	10	40	100
C012014	3/4" x 120 mm	5,000	10	40	90
C012015	3/4" x 150 mm	6,310	10	30	80
C012017	3/4" x 200 mm	8,540	10	20	50
C012018	3/4" x 250 mm	10,740	–	25	50
C012118	3/4" x 300 mm	12,250	–	7	25
C012227	3/4" x 400 mm	20,485	–	–	–
C012228	3/4" x 500 mm	25,771	–	–	–
C012728	3/4" x 1000 mm	52,280	–	–	–
C012019	1" x 40 mm	2,110	10	50	120
C012119	1" x 50 mm	2,770	10	50	100
C012020	1" x 60 mm	3,250	10	50	100
C012021	1" x 80 mm	4,370	10	30	60
C012022	1" x 100 mm	5,200	10	20	60
C012023	1" x 120 mm	6,280	10	20	60
C012024	1" x 150 mm	8,020	10	20	60
C012026	1" x 200 mm	11,074	5	15	40
C012226	1" x 250 mm	13,910	–	15	30
C012236	1" x 300 mm	16,770	–	5	15
C012136	1" x 400 mm	26,542	–	–	–
C012336	1" x 500 mm	33,142	–	–	–
C012416	1" x 1000 mm	66,771	–	–	–

CONTINUA...

■ C012 | BARILOTTO MM EXTENSION MM



...CONTINUA

Codice Code	Misura Size	€			
C012028	1"1/4 x 60 mm	4,620	–	30	70
C012029	1"1/4 x 80 mm	6,310	–	24	50
C012030	1"1/4 x 100 mm	7,710	–	18	50
C012031	1"1/4 x 150 mm	12,200	–	15	30
C012032	1"1/4 x 200 mm	15,510	–	8	30
C012133	1"1/4 x 250 mm	18,820	–	8	20
C012034	1"1/4 x 300 mm	22,240	–	3	8
C012033	1"1/4 x 400 mm	34,857	–	–	–
C012134	1"1/4 x 500 mm	44,457	–	–	–
C012235	1"1/4 x 1000 mm	87,800	–	–	–
C012435	1"1/2 x 100 mm	13,930	–	16	50
C012037	1"1/2 x 150 mm	20,060	–	8	30
C012040	1"1/2 x 200 mm	26,940	–	7	20
C012145	1"1/2 x 250 mm	35,714	–	7	13
C012046	1"1/2 x 300 mm	42,743	–	2	6
C012035	1"1/2 x 500 mm	74,140	–	–	–
C012041	2" x 100 mm	17,220	–	9	20
C012042	2" x 150 mm	25,710	–	4	15
C012043	2" x 200 mm	36,510	–	3	12
C012044	2" x 300 mm	56,740	–	1	3
C012244	2" x 500 mm	86,100	–	–	50

■ C095 | BARILOTTO SCORREVOLE MM SLIDING EXTENSION



Codice Code	Misura Size	€			
C095001	1/2" x 100 mm	3,492	10	80	200
C095002	1/2" x 150 mm	5,410	10	60	120
C095003	1/2" x 200 mm	7,164	10	40	90
C095004	3/4" x 100 mm	4,860	10	40	100
C095005	3/4" x 150 mm	7,572	10	40	80
C095006	3/4" x 200 mm	10,248	10	20	50
C095007	1" x 100 mm	6,240	10	20	60
C095008	1" x 150 mm	9,624	10	20	60
C095009	1" x 200 mm	12,504	5	15	40
C095010	1"1/4 x 100 mm	9,252	–	18	50
C095011	1"1/4 x 150 mm	13,528	–	15	30
C095012	1"1/4 x 200 mm	16,892	–	8	25

■ C076 CALOTTA CON FORI RIDOTTI NUT WITH REDUCED HOLE



Codice Code	Misura Size	€			
C076111	3/8" foro 11	0,750	10	350	800
C076215	1/2" foro 15,5	0,790	10	300	600
C076315	3/4" foro 15	0,950	10	250	500
C076319	3/4" foro 19	0,950	10	250	500
C076321	3/4" foro 21	0,880	10	250	500
C076322	3/4" foro 22	0,880	10	250	500
C076423	1" foro 23	1,440	10	130	300
C0764245	1" foro 24,5	1,440	10	130	300
C076428	1" foro 28	1,420	10	130	300
C076530	1"1/4 foro 30	2,220	10	80	-
C076640	1"1/2 foro 40	2,760	10	70	-

■ C051 CONTRODADO ESAGONALE SENZA FLANGIA HEXAGONAL NUT WITHOUT FLANGE



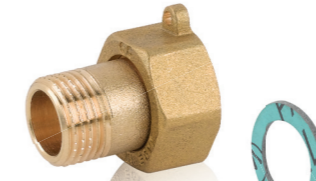
Codice Code	Misura Size	€			
C051002	1/2"	0,900	10	500	1000
C051003	3/4"	1,280	10	400	800
C051004	1"	1,560	10	200	400
C051005	1"1/4	2,570	10	120	250
C051006	1"1/2	3,240	10	80	200
C051007	2"	4,650	10	60	150

■ C054 CONTRODADO ESAGONALE CON FLANGIA HEXAGONAL NUT WITH FLANGE



Codice Code	Misura Size	€			
C054002	1/2"	0,980	10	300	700
C054003	3/4"	1,120	10	250	600
C054004	1"	1,450	10	140	300
C054005	1"1/4	2,400	10	100	200
C054006	1"1/2	3,650	10	60	120
C054007	2"	5,820	10	40	80

■ C055 RACCORDO PER CONTATORE C/GUARNIZIONE FITTING FOR METER WITH GASKET



Codice Code	Misura Size	€			
C055002	1/2" x 3/4"	2,537	10	100	200
C055003	3/4" x 1"	3,874	10	70	150

■ C070 RACCORDO PER CONTATORE LUNGO C/GUARNIZIONE LONG FITTING FOR METER WITH GASKET



Codice Code	Misura Size	€			
C070002	1/2" x 3/4"	3,728	10	80	180
C070003	3/4" x 1"	5,571	10	60	130

■ C065 PORTAGOMMA PER RUBINETTO GIARDINO PESANTE CON O-RING HEAVY INSERT FOR GARDEN TAP WITH O-RING



Codice Code	Misura Size	€			
C065002	3/4" x 1/2"	2,050	10	180	400

■ C061 PORTAGOMMA PER RUBINETTO GIARDINO LEGGERO CON O-RING INSERT FOR GARDEN TAP WITH O-RING



Codice Code	Misura Size	€			
C061002	3/4" x 1/2"	1,950	10	180	400

■ C063 | PORTAGOMMA MASCHIO MALE INSERT



Codice Code	Misura Size	€			
C06300310	3/8" x 10	1,155	10	300	600
C06300410	1/2" x 10	1,285	10	200	450
C06300414	1/2" x 14	1,340	10	200	400
C06300415	1/2" x 15	1,330	10	200	400
C06300417	1/2" x 17	1,340	10	180	380
C06300420	1/2" x 20	1,370	10	160	350
C06300515	3/4" x 15	2,194	10	100	200
C06300520	3/4" x 20	2,194	10	100	200
C06300525	3/4" x 25	2,480	10	90	180
C06300620	1" x 20	3,110	10	60	120
C06300625	1" x 25	3,075	10	60	120
C06300627	1" x 27	3,140	10	60	120
C06300630	1" x 30	3,250	10	50	100
C06300632	1" x 32	3,280	10	50	100
C06300730	1"1/4 x 30	4,930	5	30	70
C06300732	1"1/4 x 32	4,960	5	30	70
C06300838	1"1/2 x 38	7,680	–	20	50
C06300840	1"1/2 x 40	7,680	–	20	50
C06300845	1"1/2 x 45	8,800	–	20	50
C06300850	1"1/2 x 50	10,420	–	20	50
C06300950	2" x 50	11,760	–	15	25
C06300960	2" x 60	19,020	–	15	25

■ C064 | PORTAGOMMA FEMMINA FEMALE INSERT



Codice Code	Misura Size	€			
C06400310	3/8" x 10	1,278	10	300	600
C06400410	1/2" x 10	1,535	10	200	450
C06400415	1/2" x 15	1,650	10	200	400
C06400420	1/2" x 20	1,720	10	160	350
C06400520	3/4" x 20	2,260	10	100	200
C06400525	3/4" x 25	2,570	10	90	180
C06400625	1" x 25	3,075	10	60	120
C06400630	1" x 30	3,250	10	50	100
C06400730	1"1/4 x 30	5,580	5	30	70
C06400735	1"1/4 x 35	6,220	5	30	60
C06400840	1"1/2 x 40	7,150	–	20	50

■ C075 | RACCORDO PORTAGOMMA Ø 8 FEMMINA FEMALE INSERT Ø 8



Codice Code	Misura Size	€			
C075003	F 3/8"	2,980	10	200	450
C075004	F 1/2"	3,300	10	200	400

■ C062 | RACCORDO PORTAGOMMA Ø 13 FEMMINA FEMALE INSERT Ø 13



Codice Code	Misura Size	€			
C062003	F 3/8"	3,130	10	180	400
C062004	F 1/2"	3,200	10	180	350

■ C078 | RACCORDO PORTAGOMMA Ø 8 MASCHIO MALE INSERT Ø 8



Codice Code	Misura Size	€			
C078003	M 3/8"	2,750	10	200	450
C078004	M 1/2"	2,980	10	200	400

■ C079 | RACCORDO PORTAGOMMA Ø 13 MASCHIO MALE INSERT Ø 13



Codice Code	Misura Size	€			
C079003	M 3/8"	3,942	10	180	400
C079004	M 1/2"	4,457	10	180	350

■ C072 | RACCORDO PER CASSONE COMPLETO FITTING TANK CONNECTION



Codice Code	Misura Size	€			
C072002	1/2"	5,200	10	40	100
C072003	3/4"	7,180	10	30	60
C072004	1"	9,840	5	20	40
C072005	1"1/4	13,560	–	10	25
C072006	1"1/2	24,700	–	6	20
C072007	2"	38,600	–	5	8

■ C072SC | RACCORDO PER CASSONE SENZA CODOLO E CALOTTA FITTING TANK CONNECTION WITHOUT TANG AND NUT



Codice Code	Misura Size	€			
C072002SC	1/2"	3,720	10	60	150
C072003SC	3/4"	4,800	10	40	100
C072004SC	1"	6,320	5	25	60
C072005SC	1"1/4	8,480	–	15	40
C072006SC	1"1/2	16,870	–	10	30
C072007SC	2"	25,170	–	6	12

■ C074 | PILETTA PER CASSONE COMPLETA BOTTOM TANK CONNECTION



Codice Code	Misura Size	€			
C074002	1/2"	5,014	10	40	100
C074003	3/4"	9,771	10	30	60
C074004	1"	15,685	5	20	40
C074005	1"1/4	21,771	–	10	25
C074006	1"1/2	23,785	–	6	20
C074007	2"	45,771	–	5	8

■ C074SC | PILETTA PER CASSONE SENZA CODOLO E CALOTTA BOTTOM TANK CONNECTION WITHOUT TANG AND NUT



Codice Code	Misura Size	€			
C074002SC	1/2" h 32	3,210	10	60	150
C074003SC	3/4" h 41	6,014	10	40	100
C074004SC	1" h 50	8,142	5	25	60
C074005SC	1"1/4 h 53	14,228	–	15	40
C074006SC	1"1/2 h 58	25,100	–	10	30
C074007SC	2" h 62	30,685	–	6	12

■ F50 | RACCORDO 3 VIE 1" 3 WAYS FITTING 1"



Codice Code	Misura Size	€			
F503R003	h 72 mm	6,882	–	20	50

■ F50 | RACCORDO 5 VIE 1" 5 WAYS FITTING 1"



Codice Code	Misura Size	€			
F505R005	h 72 mm	6,257	–	20	50
F506R006	h 82 mm	6,057	–	20	50
F507R007	h 91 mm	6,971	–	20	40