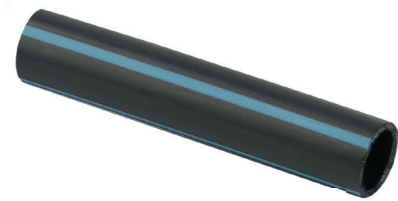


Istruzioni di Montaggio

Raccordi per tubo polietilene con anello in ottone

Assembly Instructions

Fittings for PE pipe with brass ring

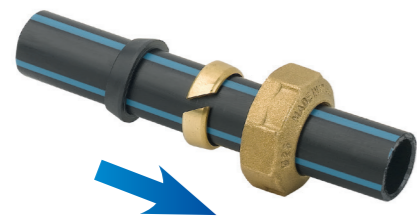


Tubo in polietilene (alta, media o bassa densità)
Polyethylene pipe (HD, BD, LD)

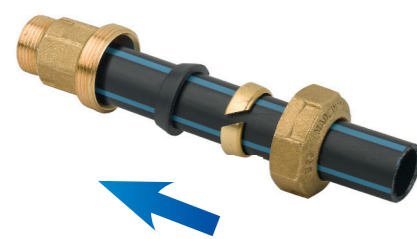


1. Corpo del giunto
2. Guarnizione in gomma
3. Anello di ancoraggio in ottone
4. Girello di serraggio

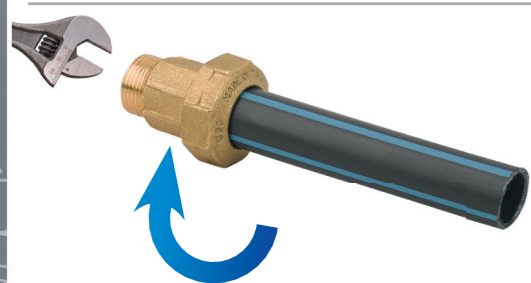
1. Joint casing
2. Rubber gasket
3. Brass ring for mechanical fastening
4. Nut



Seguire l'ordine di inserimento: il girello (4)
l'anello (3) e la guarnizione in gomma (2)
Please follow the order of insertion on the pipe: nut (4),
plastic ring (3) and rubber gasket (2)



Inserire il tubo all'interno del corpo del giunto (1), riporre
la guarnizione (2) all'interno della svasatura tronco conica,
portare quindi l'anello (3) a contatto con la guarnizione (2)
Insert the pipe inside the joint casing (1), put the gasket (2)
inside the cone - shaped flare; therefore bring the plastic
ring (3) into contact with the gasket



Avvitare il girello (4) a mano, quindi serrarlo con la chiave
Hand screw the nut (4), so clamp it with a wrench

G0010T | RACCORDO MASCHIO MALE FITTING



Codice Code	Misura Size	€			
G0010010T	ø 20 x 1/2"	2,710	—	80	200
G0010020T	ø 25 x 3/4"	4,251	—	40	100
G0010030T	ø 32 x 1"	6,171	—	25	60
G0010040T	ø 40 x 1"1/4	10,020	—	15	40
G0010050T	ø 50 x 1"1/2	14,510	—	12	25
G0010060T	ø 63 x 2"	21,805	—	6	12
G0010070T flangiato	ø 75 x 2"1/2	44,800	—	3	6

G0020T | RACCORDO FEMMINA FEMALE FITTING



Codice Code	Misura Size	€			
G0020010T	ø 20 x 1/2"	2,620	—	80	200
G0020020T	ø 25 x 3/4"	4,540	—	40	100
G0020030T	ø 32 x 1"	5,940	—	25	60
G0020040T	ø 40 x 1"1/4	10,910	—	15	40
G0020050T	ø 50 x 1"1/2	14,800	—	12	25
G0020060T	ø 63 x 2"	22,171	—	6	12
G0020070T flangiato	ø 75 x 2"1/2	46,285	—	3	6

G0030T | RACCORDO BIGIUNTO DOUBLE STRAIGHT FEMALE



Codice Code	Misura Size	€			
G0030010T	ø 20 x ø 20	4,340	—	40	80
G0030020T	ø 25 x ø 25	7,020	—	25	60
G0030030T	ø 32 x ø 32	10,450	—	15	35
G0030040T	ø 40 x ø 40	16,045	—	10	25
G0030050T	ø 50 x ø 50	21,280	—	8	15
G0030060T	ø 63 x ø 63	36,962	—	4	8

G0040T | GOMITO MASCHIO MALE ELBOW



Codice Code	Misura Size	€			
G0040010T	ø 20 x 1/2"	3,540	—	50	120
G0040020T	ø 25 x 3/4"	5,737	—	25	70
G0040030T	ø 32 x 1"	8,140	—	15	40
G0040040T	ø 40 x 1"1/4	14,033	—	8	15
G0040050T	ø 50 x 1"1/2	19,564	—	6	10
G0040060T	ø 63 x 2"	36,662	—	3	6

■ G0050T | GOMITO FEMMINA FEMALE ELBOW



Codice Code	Misura Size	€			
G0050010T	ø 20 x 1/2"	3,540	–	50	120
G0050020T	ø 25 x 3/4"	5,140	–	25	70
G0050030T	ø 32 x 1"	7,080	–	15	40
G0050040T	ø 40 x 1 1/4"	15,050	–	8	15
G0050050T	ø 50 x 1 1/2"	21,340	–	6	10
G0050060T	ø 63 x 2"	38,180	–	3	6

■ G0060T | TEE CON DERIVAZIONE FEMMINA TEE WITH FEMALE THREADED CENTRAL BRANCH



Codice Code	Misura Size	€			
G0060010T	ø 20 x 1/2" x ø 20	4,790	–	30	70
G0060020T	ø 25 x 3/4" x ø 25	9,340	–	20	35
G0060030T	ø 32 x 1" x ø 32	12,080	–	12	30
G0060040T	ø 40 x 1 1/4" x ø 40	21,224	–	5	15
G0060050T	ø 50 x 1 1/2" x ø 50	29,785	–	3	8
G0060060T	ø 63 x 2" x ø 63	54,729	–	2	5

■ G0070T | TEE TEE



Codice Code	Misura Size	€			
G0070010T	ø 20 x ø 20 x ø 20	6,420	–	20	50
G0070020T	ø 25 x ø 25 x ø 25	12,750	–	15	35
G0070030T	ø 32 x ø 32 x ø 32	15,931	–	10	30
G0070040T	ø 40 x ø 40 x ø 40	27,340	–	5	15
G0070050T	ø 50 x ø 50 x ø 50	37,700	–	3	8
G0070060T	ø 63 x ø 63 x ø 63	66,590	–	2	4

■ G0080T | RACCORDO MASCHIO RIDOTTO REDUCED MALE



Codice Code	Misura Size	€			
G0080010T	ø 25 x 1/2"	4,711	–	40	100
G0080020T	ø 32 x 3/4"	6,265	–	25	60
G0080030T	ø 40 x 1"	9,220	–	15	40

■ G0090T | RACCORDO FEMMINA RIDOTTO REDUCED FEMALE



Codice Code	Misura Size	€			
G0090010T	ø 25 x 1/2"	4,517	–	40	100
G0090020T	ø 32 x 3/4"	6,532	–	25	60
G0090030T	ø 40 x 1"	12,652	–	15	40

■ G0100T | GOMITO DOPPIO DOUBLE ELBOW



Codice Code	Misura Size	€			
G0100010T	ø 20 x ø 20	4,434	–	40	100
G0100020T	ø 25 x ø 25	8,916	–	30	50
G0100030T	ø 32 x ø 32	14,062	–	12	25
G0100040T	ø 40 x ø 40	17,714	–	7	15
G0100050T	ø 50 x ø 50	27,247	–	4	10
G0100060T	ø 63 x ø 63	47,187	–	2	5

■ G0110T | GOMITO FEMMINA CON FLANGIA FEMALE ELBOW WITH FLANGE



Codice Code	Misura Size	€			
G0110010T	ø 20 x 1/2"	4,420	–	30	80
G0110020T	ø 25 x 3/4"	6,200	–	18	50
G0110030T	ø 32 x 1"	9,257	–	12	30

■ G0120T | GOMITO A 45° F FEMALE ELBOW 45°



Codice Code	Misura Size	€			
G0120030T	ø 32 x 1"	8,434	–	15	40
G0120040T	ø 32 x 3/4"	8,630	–	15	40

■ G0130T | GOMITO A 45° M MALE ELBOW 45°



Codice Code	Misura Size	€			
G0130030T	ø 32 x 1"	8,434	—	15	40
G0130040T	ø 32 x 3/4	8,740	—	15	40

■ BOC | BOCCOLA DI RINFORZO OTTONE BRASS REINFORCEMENT INSERT



Codice Code	Misura Size	€			
BOC20	ø 20	1,714	10	350	800
BOC25	ø 25	3,285	10	300	700
BOC32	ø 32	3,571	10	150	400
BOC40	ø 40	3,928	—	60	140
BOC50	ø 50	4,514	—	35	80
BOC63	ø 63	6,685	—	20	50

■ OT | ANELLO DI ANCORAGGIO IN OTTONE BRASS ANCHOR RING



Codice Code	Misura Size	€			
OT20	ø 20	1,400	10	600	1200
OT25	ø 25	1,900	10	300	700
OT32	ø 32	2,200	10	200	500
OT40	ø 40	3,740	—	140	350
OT50	ø 50	4,200	—	100	250
OT63	ø 63	5,960	—	50	130

■ GUA | GUARNIZIONE IN GOMMA RUBBER SEAT



Codice Code	Misura Size	€			
GUA20	ø 20	1,140	10	600	1200
GUA25	ø 25	1,714	10	300	700
GUA32	ø 32	2,285	10	200	500
GUA40	ø 40	2,857	—	140	350
GUA50	ø 50	3,142	—	100	250
GUA63	ø 63	3,428	—	50	130

Informazioni Tecniche

Materiali

Componente Part	Materiale Material	Norma Standard
Corpo giunto Joint casing	CuZn40Pb2 (CW617N)	EN12165
Girello Nut	CuZn40Pb2 (CW617N)	EN12165
Guarnizione in gomma Rubber gasket	Elastomero Elastomer	EN681-1
Anello di ancoraggio antisfilamento Plastic ring for mechanical fastening	Resina Poliacetalica Resin	EN681-2
Anello di ancoraggio in ottone Brass anchor ring	CuZn39Pb3 (CW614N)	EN12165

Tubazioni utilizzabili

Suitable pipes

Materiale Material	Designazione Specification	Norma Standard	Pressione max. Max pressure	Temperatura max. Max temperature
Polietilene a bassa densità Low Density Polyethylene	PE40	UNI 7990	10 bar 145 psi	45°C 113°F
Polietilene a media densità Medium Density Polyethylene	PE63	EN12201/2	16 bar 232 psi	45°C 113°F
Polietilene ad alta densità High Density Polyethylene	PE80	EN12201/2	20 bar 290 psi	45°C 113°F
Polietilene ad alta densità High Density Polyethylene	PE100	EN12201/2	25 bar 362 psi	45°C 113°F
Reticolato PE-X PE-X		UNI 9338	10 bar 145 psi	80°C 176°F

Rapporto di prova di trazione

Tensile test report

Rapporto di prova di trazione, fino al raggiungimento del carico massimo sopportato, corrispondente allo sfilamento del tubo dal raccordo.
Tensile test report, up to maximum stress load reaching, correspondant to fitting pipe extraction.

Diametro tubo Pipe diameter	Carico di sfilamento Extraction load	Carico di sfilamento Extraction load
mm	N	Kg f
20	2400	244.65
25	2700	275.23
32	4950	504.59
40	5550	565.75
50	4200	428.13
63	7350	749.23

1 Kg f = 9.81 N